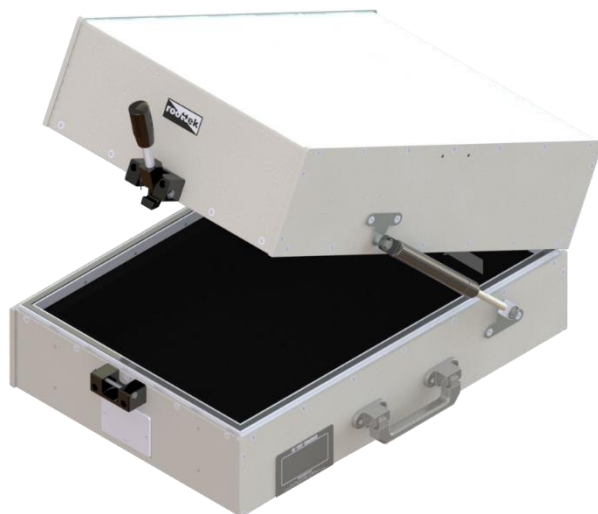


RF TEST ENCLOSURE

RT-2125

DATA SHEET



1. Main Features

RT-2125 RF Test Enclosure supports broad band testing frequency and provides optimal testing condition to test mobile device.

- Outstanding durability and simple structure
- Convenient use and maintenance
- Supports an I/O interface panel to apply various interface (IB-series)
- High performance RF absorber
- High shielding effectiveness using double layer gasket structure.
- Fixture mounting holes in the Bottom Plate,

2. Product Specifications

	W (mm)	D (mm)	H (mm)
Outer Size (Closed)	369	526	242
Outer Size (Opened)	369	585	622
Inner Size	258	388	163
Weight	Approx. 18 Kg		
Packing Size	530	585	330
Packing Weight	Approx. 22 Kg		
Interface	I/O Panel : IB-Series		

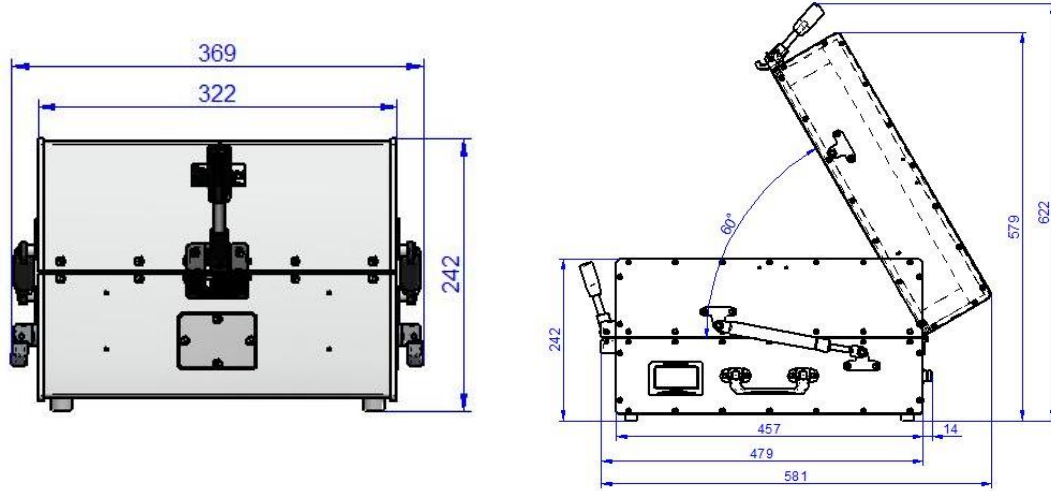
Shielding Effectiveness

Frequency – Unit : MHz	Shielding effectiveness – Unit : dB
100-3000	> 80
3000-6000	> 70
6000-18000 (optional)	> 70

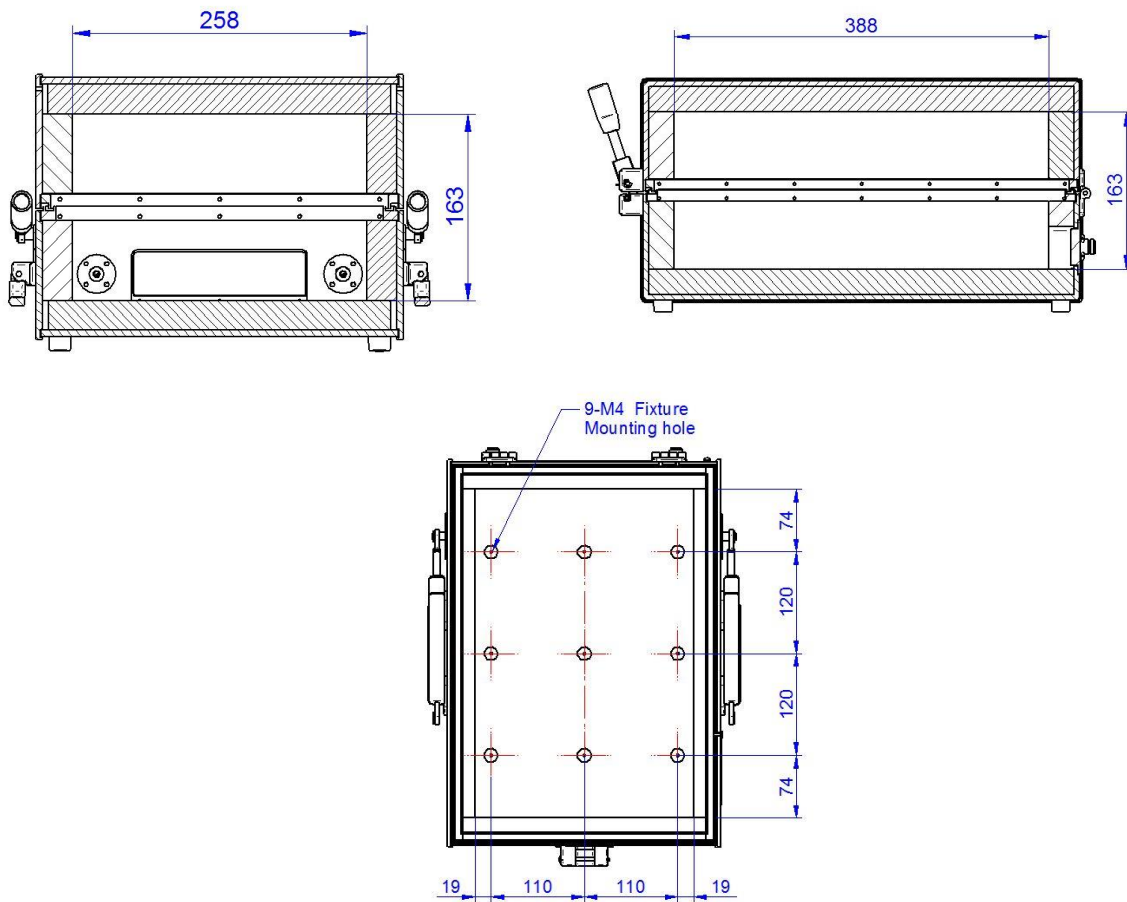
The shielding effectiveness in the above is measured when the blank I/O panel is attached.

3. Dimensions

Outside Dimensions



Inside Dimensions



Roottek.co.kr

TEL: +82-70-5138-0370

FAX : +82-31-927-9201

e-mail : roottek@roottek.co.kr

** Specification of chamber can be updated without prior notice **